

**CyberPower : UPS Line Interactive**



<b>Part Number</b>	<b>CBP-BU600E</b>	<b>CBP-BU800E</b>	<b>CBP-BU1000EA</b>	<b>BU800ELCD</b>	<b>BU1000ELCD</b>
<b>Topology</b>	Line Interactive	Line Interactive	Line Interactive	Line Interactive	Line Interactive
<b>Capacity</b>	600VA/360W	800VA/480W	1000VA/630W	800VA/480W	1000VA/630W
<b>Input plug type</b>	NEMA	NEMA	NEMA	NEMA	NEMA
<b>Output Sockets (number)</b>	AS(3)	AS(3)	AS(4)	AS(3)	AS(4)
	Overload protection	Overload protection	Overload protection	Overload protection	Overload protection
	EMI/RFI Filtration	EMI/RFI filtration	EMI/RFI filtration	EMI/RFI filtration	EMI/RFI filtration
<b>Warranty</b>	2 years including battery	2 years including battery	2 years including battery	2 years including battery	2 years including battery
<b>Software</b>	NO	No	No	No	No
<b>Energy saving</b>				Yes	Yes
<b>After sales service</b>	onsite swap-user	onsite swap-user	onsite swap-user	onsite swap-user	onsite swap-user

<b>SRP (inc. VAT)</b>	1,600	2,500	4,000	2,800	4,300
-----------------------	-------	-------	-------	-------	-------

(\*ราคา SRP เป็นราคารวมภาษีมูลค่าเพิ่มแล้ว)



<b>Part Number</b>	<b>CBP-UT600E</b>	<b>CBP-UT1000E</b>	<b>UT1500E</b>	<b>UT2200E</b>
<b>Topology</b>	Line Interactive	Line Interactive	Line Interactive	Line Interactive
<b>Capacity</b>	600VA/360W	1000VA/600W	1500VA/900W	2200VA/1320W
<b>Input plug type</b>	NEMA	NEMA	NEMA	NEMA
<b>Output Sockets (number)</b>	AS(3)	AS(4)	AS(4)	AS(4)
	Surge protection	Surge protection	Surge protection	Surge protection
	EMI/RFI filtration	EMI/RFI filtration	Phone/Network RJ11/RJ45	Phone/Network RJ11/RJ45
<b>Warranty</b>	2 years including battery	2 years including battery	2 years including battery	2 years including battery
<b>Software</b>	No	No	PowerPanel® Personal Edition	PowerPanel® Personal Edition
<b>Energy saving</b>				
<b>After sales service</b>	onsite swap-user	onsite swap-user	onsite swap-user	onsite swap-user

<b>SRP (inc. VAT)</b>	2,000	3,190	8,300	10,900
-----------------------	-------	-------	-------	--------

(\*ราคา SRP เป็นราคารวมภาษีมูลค่าเพิ่มแล้ว)



<b>Part Number</b>	<b>Value600E</b>	<b>CBP-VALUE800E</b>	<b>CBP-VALUE1000E</b>	<b>CBP-UT800EG</b>
<b>Topology</b>	Line Interactive	Line Interactive	Line Interactive	Line Interactive
<b>Capacity</b>	600VA/360W	800VA/480W	1000VA/550WATT	800VA/480W
<b>Input plug type</b>	IEC C14	IEC C14	IEC C14	NEMA
<b>Output Sockets (number)</b>	AS(3)	AS(3)	AS(3)	AS(8) - Back up (4)
	Surge protection	Surge protection	Surge protection	Surge protection (4)
	Phone/Network RJ11/RJ45	Phone/Network RJ11/RJ45	Phone/Network RJ11/RJ45	EMI/RFI filtration
<b>Warranty</b>	2 years including battery	2 years including battery	2 years including battery	2 years including battery
<b>Software</b>	PowerPanel® Personal Edition	PowerPanel® Personal Edition	PowerPanel® Personal Edition	No
<b>Energy saving</b>				Yes
<b>After sales service</b>	onsite swap-user	onsite swap-user	onsite swap-user	onsite swap-user

<b>SRP (inc. VAT)</b>	2,790	3,500	5,200	2,800
-----------------------	-------	-------	-------	-------

(\*ราคา SRP เป็นราคารวมภาษีมูลค่าเพิ่มแล้ว)

**CyberPower : UPS Line Interactive**



Part Number	Value1200ELCD	Value1500ELCD	Value2200ELCD
Topology	Line Interactive	Line Interactive	Line Interactive
Capacity	1200VA/720W	1500VA/900W	2200VA/1320W
Input plug type	IEC C14	IEC C14	IEC C14
Output Sockets (number)	AS(4)	AS(4)	AS(4)
	Surge protection	Surge protection	Surge protection
	Phone/Network RJ11/RJ45	Phone/Network RJ11/RJ45	Phone/Network RJ11/RJ45
Warranty	2 years including battery	2 years including battery	2 years including battery
Software	PowerPanel® Personal Edition	PowerPanel® Personal Edition	PowerPanel® Personal Edition
After sales service	onsite swap-user	onsite swap-user	onsite swap-user

SRP (inc. VAT)	7,200	8,300	10,900
			(*ราคา SRP เป็นราคารวมภาษีมูลค่าเพิ่มแล้ว)

**CyberPower : On-Line UPS**



Part Number	OLS1000E	OLS1500E
Topology	Online Double Conversion	Online Double Conversion
Capacity	1000VA/900W	1500VA/1350W
Input plug type	IEC-C14 with NEMA male type	IEC-C14 with NEMA male type
Output Sockets (number)	IEC-C13 (4)	IEC-C13 (4)
- Surge protection	Yes	Yes
-		
Warranty	2 years	2 years
Software	Yes [USB/RS232/SNMP(optional)]	Yes [USB/RS232/SNMP(optional)]
After sales service	Onsite service	Onsite service

SRP (inc. VAT)	14,000	18,500
		(*ราคา SRP เป็นราคารวมภาษีมูลค่าเพิ่มแล้ว)



Part Number	OLS2000E	OLS3000E
Topology	Online Double Conversion	Online Double Conversion
Capacity	2000VA/1800W	3000VA/2700W
Input plug type	IEC-C14 with NEMA male type	IEC-C20 with NEMA male type
Output Sockets (number)	IEC-C13 (4), hardwire terminal (1)	IEC 19 (1), IEC 13 (4)
- Surge protection	Yes	Yes
-		
Warranty	2 years	2 years
Software	Yes [USB/RS232/SNMP(optional)]	Yes [USB/RS232/SNMP(optional)]
After sales service	Onsite service	Onsite service

SRP (inc. VAT)	25,500	30,100
		(*ราคา SRP เป็นราคารวมภาษีมูลค่าเพิ่มแล้ว)

**CyberPower : On-Line UPS**



<b>Part Number</b>	<b>OLS1000ELCDET2U</b>	<b>OLS1500ELCDRT2U</b>	<b>OLS2000ELCDRT2U</b>
<b>Topology</b>	Online Double Conversion	Online Double Conversion	Online Double Conversion
<b>Capacity</b>	1000VA/900W	1500VA/1350W	2000VA/1800W
<b>Input plug type</b>	IEC-C14 with NEMA male type	IEC-C14 with NEMA male type	IEC-C14 with NEMA male type
<b>Output Sockets (number)</b>	IEC 13 (6)	IEC 13 (6)	IEC 13 (8)
<b>- Surge protection</b>	Yes	Yes	Yes
<b>Warranty</b>	2 years	2 years	2 years
<b>Software</b>	Yes [USB/RS232/SNMP(optional)]	Yes [USB/RS232/SNMP(optional)]	Yes [USB/RS232/SNMP(optional)]
<b>After sales service</b>	Onsite service	Onsite service	Onsite service

<b>SRP (inc. VAT)</b>	19,500	22,400	32,900
-----------------------	--------	--------	--------



<b>Part Number</b>	<b>OLS3000ELCDRT2U</b>	<b>OLS6000E</b>	<b>OLS10000EXL</b>
<b>Topology</b>	Online Double Conversion	Online Double Conversion	Online Double Conversion
<b>Capacity</b>	3000VA/2700W	6000VA/5400W	10000VA/9000W
<b>Input plug type</b>	IEC-C20 with NEMA male type	Hardwire terminal	Hardwire terminal
<b>Output Sockets (number)</b>	IEC 19 (1), IEC 13 (8)	Hardwire terminal	Hardwire terminal
<b>- Surge protection</b>	Yes	Yes	Yes
<b>Warranty</b>	2 years	2 years	2 years
<b>Software</b>	Yes [USB/RS232/SNMP(optional)]	Yes [USB/RS232/SNMP(optional)]	Yes [USB/RS232/SNMP(optional)]
<b>After sales service</b>	Onsite service	Onsite service	Onsite service

<b>SRP (inc. VAT)</b>	36,900	70,000	63,500
-----------------------	--------	--------	--------



<b>Part Number</b>	<b>OLS3S20KEXL</b>	<b>OLS6000ELCDRT6U</b>
<b>Topology</b>	Online Double Conversion	Online Double Conversion
<b>Capacity</b>	20000VA/18000W	6000VA/5400W
<b>Input plug type</b>	Hardwire terminal	Hardwire terminal
<b>Output Sockets (number)</b>	Hardwire terminal	Hardwire terminal
<b>- Surge protection</b>	Yes	Yes
<b>Warranty</b>	2 years	2 years
<b>Software</b>	Yes [USB/RS232/SNMP(optional)]	Yes [USB/RS232/SNMP(optional)]
<b>After sales service</b>	Onsite service	Onsite service

<b>SRP (inc. VAT)</b>	Call	78,000
-----------------------	------	--------

**CyberPower : EPS**



Part Number	CPS600E-AS	CPS1000E-AS	CPS1500PIE
SIS P/N			
Topology	Line Interactive	Line Interactive	Line Interactive
Capacity	600VA/420W	1000VA/700W	1500VA/1050W
Input plug type	IEC-C14 with NEMA male type	IEC-C14 with NEMA male type	Hardwire terminal
Output Sockets (number)	AS (1)	AS (2)	Hardwire terminal (1)
- Surge protection	Yes	Yes	Yes
Unit Warranty	2years	2years	2years
Software	NO	NO	Only CPS1500PRO with optional SNMP card
After sales service	Onsite	Onsite	Onsite

SRP (inc. VAT)	7,600	11,200	18,900
----------------	-------	--------	--------



Part Number	CPS3500PRO	CPS5000PRO	CPS7500PRO
SIS P/N			
Topology	Line Interactive	Line Interactive	Line Interactive
Capacity	3500VA/2450W	5000VA/3500W	7500VA/5250W
Input plug type	Hardwire terminal	Hardwire terminal	Hardwire terminal
Output Sockets (number)	Hardwire terminal (1)	Hardwire terminal (1)	Hardwire terminal (1)
- Surge protection	Yes	Yes	Yes
Unit Warranty	2 years	2 years	2 years
Software	Only CPS1500PRO with optional SNMP card	optional SNMP card	optional SNMP card
After sales service	Onsite	Onsite	Onsite

SRP (inc. VAT)	36,300	53,000	70,200
----------------	--------	--------	--------

CPS7500PRO

## Emergency Power Systems

No More Need for the Worst-Case Scenario

LCD Display

AVR

External Battery

Manual Switch

Pure Sine Wave

SNMP/HTTP





**APC Smart UPS : SMC with LCD Display**



**SPECIAL OFFER**  
3 YEARS WARRANTY  
(On-site Swap)

<b>Part number</b>	SMC1000I	SMC1500I	SMC2000I
<b>SIS P/N</b>	KIT-SMC1000I	KIT-SMC1500I	KIT-SMC2000I
<b>Topology</b>	Line Interactive	Line Interactive	Line Interactive
<b>Output power capacity</b>	1000VA/ 600W	1500VA / 900W	2000VA / 1300W
<b>Input voltage</b>	180 - 287VAC	180 - 287VAC	180 - 287VAC
<b>Output voltage</b>	220, 230, 240VAC	220, 230, 240VAC	220, 230, 240VAC
<b>Warranty</b>	2+1Y onsite 5x8 NBD	2+1Y onsite 5x8 NBD	2+1Y onsite 5x8 NBD
<b>Software</b>	PowerChute Business Edition	PowerChute Business Edition	PowerChute Business Edition
<b>SRP (inc. VAT)</b>	15,076	19,752	26,354



**SPECIAL OFFER**  
3 YEARS WARRANTY  
(On-site Swap)

<b>Part number</b>	SMC3000I	SMC1000I-2U	SMC1500I-2U
<b>SIS P/N</b>	KIT-SMC3000I	KIT-SMC1000I-2U	KIT-SMC1500I-2U
<b>Topology</b>	Line Interactive	Line Interactive	Line Interactive
<b>Output power capacity</b>	3000VA / 2100W	1000VA / 600W	1500VA / 900W
<b>Input voltage</b>	180 - 287VAC	180 - 287VAC	180 - 287VAC
<b>Output voltage</b>	220, 230, 240VAC	220, 230, 240VAC	220, 230, 240VAC
<b>Warranty</b>	2+1Y onsite 5x8 NBD	2+1Y onsite 5x8 NBD	2+1Y onsite 5x8 NBD
<b>Software</b>	PowerChute Business Edition	PowerChute Business Edition	PowerChute Business Edition
<b>SRP (inc. VAT)</b>	34,005	16,392	21,207

**APC Smart UPS : SMT Rack Model**

**SPECIAL OFFER**  
3 YEARS WARRANTY  
(On-site Swap)



<b>Part number</b>	SMC2000I-2U	SMC3000RMI2U
<b>SIS P/N</b>	KIT-SMC2000I-2U	KIT-SMC3000I2U
<b>Topology</b>	Line Interactive	Line Interactive
<b>Output power capacity</b>	2000VA / 1300W	3000VA / 2100W
<b>Input voltage</b>	180 - 287VAC	180 - 287VAC
<b>Output voltage</b>	220, 230, 240VAC	220, 230, 240VAC
<b>Warranty</b>	2+1Y onsite 5x8 NBD	2+1Y onsite 5x8 NBD
<b>Software</b>	PowerChute Business Edition	PowerChute Business Edition
<b>SRP (inc. VAT)</b>	32,175	41,002

**APC Smart UPS : SMT Tower Model**



<b>Part number</b>	SMT750I	SMT1000I	SMT1500I
<b>SIS P/N</b>	KIT-SMT750I	KIT-SMT1000I	KIT-SMT1500I
<b>Topology</b>	Line Interactive	Line Interactive	Line Interactive
<b>Output power capacity</b>	750VA / 500W	1000VA / 700W	1500VA / 1000W
<b>Input voltage</b>	160 - 286VAC	160 - 286VAC	160 - 286VAC
<b>Output voltage</b>	220, 230, 240VAC	220, 230, 240VAC	220, 230, 240VAC
<b>Warranty</b>	2+1Y onsite 5x8 NBD	2+1Y onsite 5x8 NBD	2+1Y onsite 5x8 NBD
<b>Option</b>	AP9630 (Network Management Card)	AP9630 (Network Management Card)	AP9630 (Network Management Card)

<b>SRP (inc. VAT)</b>	13,322	21,047	24,524
-----------------------	--------	--------	--------



<b>Part number</b>	SMT2200I	SMT3000I
<b>SIS P/N</b>	KIT-SMT2200I	KIT-SMT3000I
<b>Topology</b>	Line Interactive	Line Interactive
<b>Output power capacity</b>	2200VA / 1980W	3000VA / 2700W
<b>Input voltage</b>	160 - 286VAC	160 - 286VAC
<b>Output voltage</b>	220, 230, 240VAC	220, 230, 240VAC
<b>Warranty</b>	2+1Y onsite 5x8 NBD	2+1Y onsite 5x8 NBD
<b>Option</b>	AP9630 (Network Management Card)	AP9630 (Network Management Card)

<b>SRP (inc. VAT)</b>	38,841	51,296
-----------------------	--------	--------

**APC Smart UPS : SMT Rack Model**



<b>Part number</b>	SMT750RMI2U	SMT1000RMI2U	SMT1500RMI2U
<b>SIS P/N</b>	KIT-SMT750RMI2U	KIT-SMT1000RMI2U	KIT-SMT1500RMI2U
<b>Topology</b>	Line Interactive	Line Interactive	Line Interactive
<b>Output power capacity</b>	750VA / 500W	1000VA / 700W	1500VA / 1000W
<b>Input voltage</b>	160 - 286VAC	160 - 286VAC	160 - 286VAC
<b>Output voltage</b>	220, 230, 240VAC	220, 230, 240VAC	220, 230, 240VAC
<b>Warranty</b>	2+1Y onsite 5x8 NBD	2+1Y onsite 5x8 NBD	2+1Y onsite 5x8 NBD
<b>Option</b>	AP9630 (Network Management Card)	AP9630 (Network Management Card)	AP9630 (Network Management Card)

<b>SRP (inc. VAT)</b>	18,051	22,031	33,887
-----------------------	--------	--------	--------



<b>Part number</b>	SMT2200RMI2U	SMT3000RMI2U
<b>SIS P/N</b>	KIT-SMT2200RMI2U	KIT-SMT3000RMI2U
<b>Topology</b>	Line Interactive	Line Interactive
<b>Output power capacity</b>	2200VA / 1980W	3000VA / 2700W
<b>Input voltage</b>	160 - 286VAC	160 - 286VAC
<b>Output voltage</b>	220, 230, 240VAC	220, 230, 240VAC
<b>Warranty</b>	2+1Y onsite 5x8 NBD	2+1Y onsite 5x8 NBD
<b>Option</b>	AP9630 (Network Management Card)	AP9630 (Network Management Card)

<b>SRP (inc. VAT)</b>	46,320	57,480
-----------------------	--------	--------

**APC Smart UPS: SMX Series**



<b>Part number</b>	SMX750I	SMX1000I	SMX1500RMI2U
<b>SIS P/N</b>	KIT-SMX750I	KIT-SMX1000I	KIT-SMX1500RMI2U
<b>Topology</b>	Line Interactive	Line Interactive	Line Interactive
<b>Output power capacity</b>	750VA / 600W	1000VA / 800W	1500VA / 1200W
<b>Input voltage</b>	160 - 286VAC	160 - 286VAC	160 - 286VAC
<b>Output voltage</b>	220, 230, 240VAC	220, 230, 240VAC	220, 230, 240VAC
<b>Warranty</b>	2+1Y onsite 5x8 NBD	2+1Y onsite 5x8 NBD	2+1Y onsite 5x8 NBD
<b>Option</b>	AP9630, SMX48RMBP2U	AP9630, SMX48RMBP2U	AP9630, SMX48RMBP2U

<b>SRP (inc. VAT)</b>	21,389	25,669	35,685
-----------------------	--------	--------	--------



<b>Part number</b>	SMX2200RMHV2U	SMX3000HV	SMX3000HVNC
<b>SIS P/N</b>	KIT-SMX2200RMHV2U	KIT-SMX3000HV	KIT-SMX3000HVNC
<b>Topology</b>	Line Interactive	Line Interactive	Line Interactive
<b>Output power capacity</b>	2200VA / 1980W	3000VA / 2700W	3000VA / 2700W
<b>Input voltage</b>	140 - 280VAC	140 - 280VAC	140 - 280VAC
<b>Output voltage</b>	220, 230, 240VAC	220, 230, 240VAC	220, 230, 240VAC
<b>Warranty</b>	2+1Y onsite 5x8 NBD	2+1Y onsite 5x8 NBD	2+1Y onsite 5x8 NBD
<b>Option</b>	AP9630, SMX120RMBP2U	AP9630, SMX120BP	SMX120BP

<b>SRP (inc. VAT)</b>	49,327	64,917	81,448
-----------------------	--------	--------	--------

**APC Smart UPS On-Line**



<b>Part number</b>	SURT1000XLI	SRT2200XLI	SRT3000XLI
<b>Topology</b>	Double Conversion Online	Double Conversion Online	Double Conversion Online
<b>Output power capacity</b>	1000VA / 700W	2200VA / 1980W	3000VA / 2700W
<b>Input voltage</b>	Single phase 230VAC	Single phase 230VAC	Single phase 230VAC
<b>Output voltage</b>	Single phase 230VAC	Single phase 230VAC	Single phase 230VAC
<b>Warranty</b>	2+1Y onsite 5x8 NBD	2+1Y onsite 5x8 NBD	2+1Y onsite 5x8 NBD
<b>Option</b>	SURTRK, SURT48XLBP	SRTRK4, SRT72BP	SRTRK4, SRT96BP

<b>SRP (inc. VAT)</b>	26,022	50,012	64,189
-----------------------	--------	--------	--------





**APC Smart UPS On-Line**



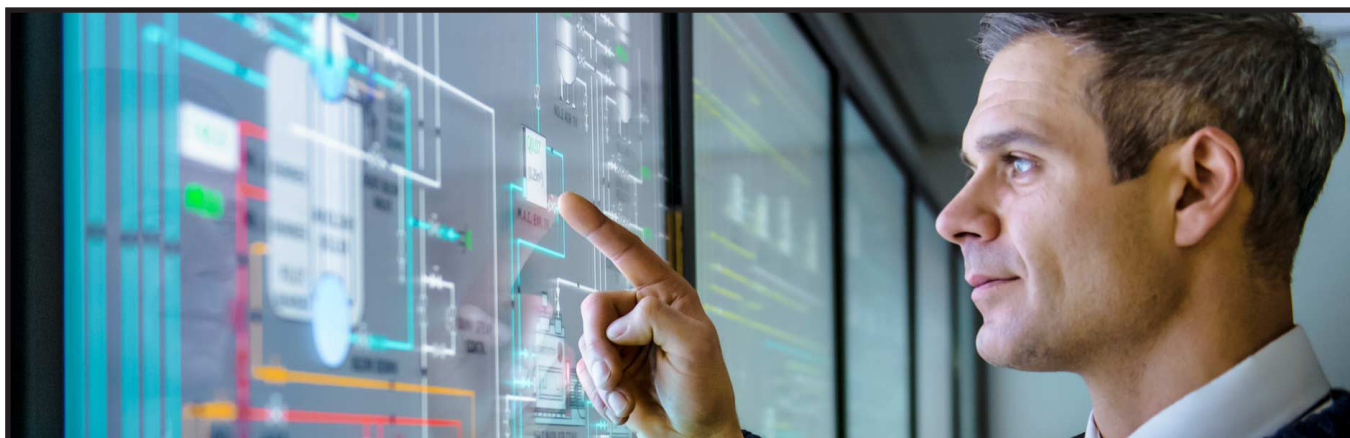
<b>Part number</b>	SRT5KXLI	SRT6KXLI	SRT8KXLI
<b>Topology</b>	Double Conversion Online	Double Conversion Online	Double Conversion Online
<b>Output power capacity</b>	5,000VA / 4,500W	6,000VA / 6,000W	8,000VA / 8,000W
<b>Input voltage</b>	Single phase 230VAC	Single phase 230VAC	Single phase 230VAC or Three phase
<b>Output voltage</b>	Single phase 230VAC	Single phase 230VAC	Single phase 230VAC
<b>Warranty</b>	2Y onsite 5x8 NBD with 2PM/year	2Y onsite 5x8 NBD with 2PM/year	2Y onsite 5x8 NBD with 2PM/year
<b>Option</b>	SRTRK2, SRT192BP	SRTRK2, SRT192BP	SRTRK2, SRT192BP2
<b>SRP (inc. VAT)</b>	132,359	143,701	181,686



<b>Part number</b>	SRT10KXLI	SURT15KRMXLI	SURT20KRMXLI
<b>Topology</b>	Double Conversion Online	Double Conversion Online	Double Conversion Online
<b>Output power capacity</b>	10,000VA / 10,000 W	15,000VA / 12,000W	20,000VA / 16,000W
<b>Input voltage</b>	Single phase 230VAC or Three phase	Single phase 230VAC or Three phase	Single phase 230VAC or Three phase
<b>Output voltage</b>	Single phase 230VAC	Single phase 230VAC or Three phase	Single phase 230VAC or Three phase
<b>Warranty</b>	2Y onsite 5x8 NBD with 2PM/year	2Y onsite 5x8 NBD with 2PM/year	2Y onsite 5x8 NBD with 2PM/year
<b>Option</b>	SRTRK2, SRT192BP2	SURT192RMXLBP2	SURT192RMXLBP2
<b>SRP (inc. VAT)</b>	217,039	call	call

UPS PRODUCTS

304



**Protect your mission-critical  
IT Network**

Smart-UPS Network Edge



**Line Interactive UPS : PSA itON series**

**Line Interactive UPS : PSA itON series**  
 เหมาะกับ PC & Office Workstations  
 ประกัน 3 ปี onsite เสียเปลี่ยนตัวใหม่



Model	PSA650-SOHO	PSA850-BX (Exclusive at SiS)	PSA1000-BX
Part No.	EMS-PSA650-SOHO	EMS-PSA850-BX	EMS-PSA1000-BX
กำลังไฟฟ้า (VA/Watt)	650VA/390W	850VA/480W	1000/600
แรงดัน Input (VAC)	162 – 290VAC	162 – 290VAC	160-290VAC
แรงดัน Output (VAC)	230V+10%, -20%	230V +10% & -10%	220VAC/ 230VAC/ 240VAC
Power Factor	0.6	0.6	0.6
Software	None	None	None
Backup time	10 minutes -120WLoad	5 minutes- Half Load	6 minutes- Half Load
Warranty	3 Yrs On Site Replacement Warranty, not include rural area and Pattani, Ya-La, Narathiwass	3 Yrs On Site Replacement Warranty, not include rural area and Pattani, Ya-La, Narathiwass	3 Yrs On Site Replacement Warranty, not include rural area and Pattani, Ya-La, Narathiwass
SRP (inc. VAT)	1,750	2,302	3,930

**Line Interactive UPS : PSA series**

**Line Interactive UPS : PSA series** เหมาะกับ PC & Office Workstations  
 ประกัน 3 ปี onsite เสียเปลี่ยนตัวใหม่



Model	PSA1000MT3230U	PSA1500MT3230U
Part No.	EMS-PSA1000MT3230U	EMS-PSA1500MT3230U
กำลังไฟฟ้า(VA/Watt)	1000/600	1500/900
แรงดัน Input	160-287VAC	160-287VAC
แรงดัน Output	230VAC ±5%	230VAC ±5%
Power factor	0.6	0.6
Software	Multilink® Software	Multilink® Software
เข้าสลับ Input	10-13 minutes – Half Load	10-13 minutes – Half Load
เข้าสลับ Output	3 Yrs On Site Replacement Warranty,	3 Yrs On Site Replacement Warranty,
Back up time (Full Load)	not include rural area and Pattani,	not include rural area and Pattani,
Warranty	Ya-La, Narathiwass	Ya-La, Narathiwass
SRP (inc. VAT)	5,885	6,120

**Line Interactive UPS : PSI series**

**Line Interactive UPS: PSI series Rack, Tower types**  
 เหมาะกับ Standalone Server ประกัน 3 ปี onsite เสียเปลี่ยนตัวใหม่



Model	PS1000RT3-230	PS1500RT3-230	PS2200RT3-230	PS3000RT3-230
Part No.	EMS-PS1000RT3-230	EMS-PS1500RT3-230	EMS-PS2200RT3-230	EMS-PS3000RT3-230
กำลังไฟฟ้า(VA/Watt)	1000VA/900Watt	1500VA/1350Watt	2200VA/1980Watt	3000VA/2700Watt
แรงดัน Input (VAC)		165-300		
แรงดัน Output (VAC)		220/230/240+/-10%		
คาชความถี่ขาเข้า Input (Hz)		45-65		
คาชความถี่ขาเข้า Output (Hz)		50/60		
Wave form		Pure sine wave		
Power factor		0.9		
Software		Multilink		
เข้าสลับ Input	IEC-C14x1	IEC-C14x1	IEC-C20x1	IEC-C20x1
เข้าสลับ Output	IEC-C13x8	IEC-C13x8	IEC-C13x8+IEC-C19x1	IEC-C13x8+IEC-C19x1
Back up time (Full Load)	4 mins	3 mins	3 mins	3 mins
Hot-swappable battery		Yes		
Warranty	3 Yrs On Site Replacement Warranty, not include rural area and Pattani, Ya-La, Narathiwass			
SRP (inc. VAT)	16,125	20,448	26,065	34,304

**Online double conversion UPS : GXT-MT plus series**

**Online double conversion UPS : GXT-MT+ series**  
 Rack, Tower types  
 เหมาะกับ Standalone Server



Model	GXT1000MTPLUS CX	GXT2000MTPLUS CX	GXT3000MTPLUS CX
Part Number	PEMS-GXT1000MTPLUSCX	EMS-GXT2000MTPLUSCX	EMS-GXT3000MTPLUSCX
กำลังไฟฟ้า (VA/Watt)	1000 VA / 900 W	2000 VA / 1800 W	3000 VA / 2700 W
แรงดัน Input (VAC)	110-270	110-270	110-270
แรงดัน Output (VAC)	208/220/230/240VAC	208/220/230/240VAC	208/220/230/240VAC
Power Factor	0.9	0.9	0.9
Software	ViewPower Pro	ViewPower Pro	ViewPower Pro
Backup time	11 minutes – Half Load	12 minutes – Half Load	13 minutes – Half Load
Warranty	3 Yrs On Site Replacement Warranty, not include rural area and Pattani, Ya-La, Narathiwass	3 Yrs On Site Replacement Warranty, not include rural area and Pattani, Ya-La, Narathiwass	3 Yrs On Site Replacement Warranty, not include rural area and Pattani, Ya-La, Narathiwass
SRP (inc. VAT)	10,978	19,891	24,696

**Online double conversion UPS : GXT4 series**

Online double conversion UPS :  
GXT4 series Rack,Tower types  
เหมาะสำหรับ อุปกรณ์ใน Data center



เพิ่ม battery ได้  
แถม rack kit ทุกรุ่น



Model	GXT4-1000RT230	GXT4-1500RT230	GXT4-2000RT230	GXT4-3000RT230
Part No.	EMS-GXT4-1000RT230	EMS-GXT4-1500RT230	EMS-GXT4-2000RT230	EMS-GXT4-3000RT230
กำลังไฟฟ้า(VA/Watt)	1000VA/900Watt	1500VA/1350Watt	2000VA/1800Watt	3000VA/2700Watt
แรงดัน Input (VAC)	177-280	177-280	177-280	196-280
แรงดัน Output (VAC)	220/230/240±3%			
ความถี่ขาเข้า Input (Hz)	40-70			
ความถี่ขาเข้า Output (Hz)	50/60			
Wa ve form	Pure sine wave			
Power factor	0.9			
Software	Multilink			
เต้าเสียบ Input	1x IEC-C14	1x IEC-C14	1x IEC-C14	1x IEC-C14
เต้าเสียบ Output	6x IEC-C13	6x IEC-C13	6x IEC-C13	6x IEC-C13+IEC-C19x1
Back up time (Full Load)	7 mins	4 mins	3 mins	3 mins
Warranty	3 years onsite by Emerson			
<b>SRP (inc. VAT)</b>	<b>23,219</b>	<b>28,141</b>	<b>37,771</b>	<b>49,006</b>

เพิ่ม battery ได้  
เฉพาะรุ่น 5000/  
6000/10000VA  
แถม rack kit+IS-WEB-  
CARD



Model	GXT4-5000RT230	GXT4-6000RT230	GXT4-10000RT230
Part No.	EMS-GXT4-5000RT230	EMS-GXT4-6000RT230	EMS-GXT4-10000RT230
กำลังไฟฟ้า(VA/Watt)	5000VA/400Watt	6000VA/4800Watt	10000VA/9000Watt
แรงดัน Input (VAC)	176-280		
แรงดัน Output (VAC)	200/208/220/230/240 ± 2%		
ความถี่ขาเข้า Input (Hz)	40-70		
ความถี่ขาเข้า Output (Hz)	50/60		
Wave form	Pure sine wave		
Power factor	0.8	0.8	0.9
Software	Multilink		
เต้าเสียบ Input	PD2-CE6HDWRMBSx2	PD2-CE6HDWRMBSx2	PD2-CE10HDWRMBSx2
เต้าเสียบ Output	6x IEC-C13+2xIEC-C19	6x IEC-C13+2xIEC-C19	4x IEC-C13+4xIEC-C19
Back up time (Full Load)	9	7	4
Warranty	2 years onsite by Emerson		
<b>SRP (inc. VAT)</b>	<b>100,580</b>	<b>109,675</b>	<b>137,495</b>

GXT-4 external battery  
แถม rack kit ทุกรุ่น

Part No.	ใช้กับ GXT-4 model	NDP (Exc. Vat)	SRP (Inc.Vat)
EMS-GXT4-48VBATT	1000/1500/2000RT230	14,000.00	17,655.00
EMS-GXT4-72VBATT	3000RT230	19,400.00	24,449.50
EMS-GXT4-240VBATT	5000/6000/10000RT230	31,200.00	39,376.00

**Online double conversion UPS : ITA series**

Online double conversion UPS :  
ITA series Rack,Tower types  
เหมาะสำหรับอุปกรณ์ใน Data center

\* ทุกรุ่นไม่มี battery ในตัว



ITA 5-10K



ITA 16-20K  
ต้องใส่ Battery เพิ่ม  
ครั้งละ 2 unit

Model	01201056	01200858	01200610	01200758	01200782
Part No.	EMS-01201056	EMS-01200858	EMS-01200610	EMS-01200758	EMS-01200782
กำลังไฟฟ้า(VA/Watt)	5000VA/4500Watt	6000VA/4800Watt	10000VA/9000Watt	16000VA/14400Watt	20000VA/18000Watt
แรงดัน Input (VAC)	120-276	120-276	120-276	228-478	228-478
แรงดัน Output (VAC)	230+/-3%	230+/-3%	230+/-3%	230+/-1%	230+/-1%
ความถี่ขาเข้า Input (Hz)	45-65	45-65	45-65	45-70	45-70
ความถี่ขาเข้า Output (Hz)	50Hz+/-0.25%	50Hz+/-0.25%	50Hz+/-0.25%	50Hz+/-0.25%	50Hz+/-0.25%
Wave form	Pure sine wave	Pure sine wave	Pure sine wave	Pure sine wave	Pure sine wave
Power factor	0.9	0.8	0.9	0.9	0.9
Internal battery	No				
Warranty	2 years onsite by Emerson				
<b>SRP (inc. VAT)</b>	<b>51,898</b>	<b>62,560</b>	<b>91,485</b>	<b>159,965</b>	<b>182,863</b>